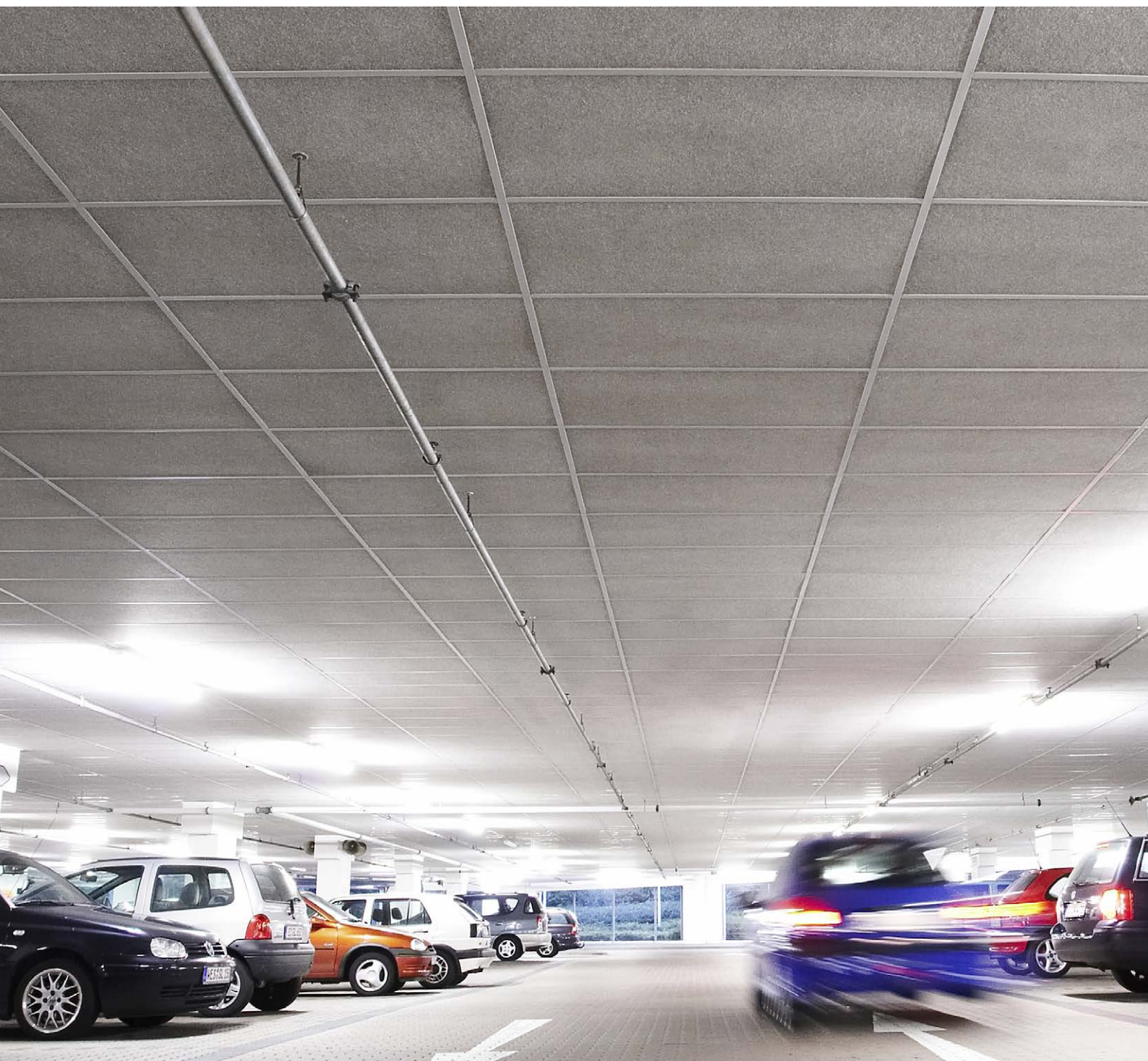


DATASHEET

Rockfon® Facett



Sounds Beautiful

Rockfon® Facett


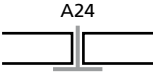

- Soft structured surface
- High sound absorption (Class A) and the highest fire safety (Class A1)
- Provides premium thermal insulation that is ideal for areas such as parking garages (high thermal conductivity $\lambda_D = 37 \text{ mW/mK}$)
- Full dimensional stability and resistance to 100% relative air humidity
- Tiles recommended for garages, industrial and production facilities

Product Description

- Stone wool tile
- Visible side: micro-textured painted white-grey fleece
- Rear side: non-laminated
- Edge: not painted

Application Areas

- Healthcare
- Industry
- Office
- Leisure

Edges	Module size (mm)	Weight (kg/m ²)	MS / MS Easy Access (mm)	Recommended installation System	Recycled Content	 Full Scope - V 4.0	A1-A3 Production stage impact (kg CO ₂ eq/m ²)*	A1-C4 Full life cycle impact (kg CO ₂ eq/m ²)*
	1200 x 600 x 40	4.1	50 / 200	Rockfon® System T24 A	42%	Silver	3.69	4.83
	1200 x 600 x 50	5.0	50 / 200	Rockfon® System T24 A			5.9	7.24
	1200 x 600 x 60	5.9	80 / 250	Rockfon® System T24 A			5.71	6.97
	1200 x 600 x 80	7.7	80 / 250	Rockfon® System T24 A			7.3	8.96
	1200 x 600 x 100	9.5	100 / 300	Rockfon® System T24 A			8.88	11
	1200 x 600 x 50	5.0	54 / 54	Rockfon® System B Adhesive	42	Silver	5.9	7.24
			50 / 50	Rockfon® System B Hook				
	1200 x 600 x 60	5.9	64 / 64	Rockfon® System B Adhesive			6.89	8.49
			60 / 60	Rockfon® System B Hook				
	1200 x 600 x 80	7.3	84 / 84	Rockfon® System B Adhesive			8.48	10.5
			80 / 80	Rockfon® System B Hook				
1200 x 600 x 100	9.0	104 / 104	Rockfon® System B Adhesive	10.4	12.9			
			100 / 100	Rockfon® System B Hook				

MS = Minimum suspension

MS easy access = Minimum suspension - tiles demountable

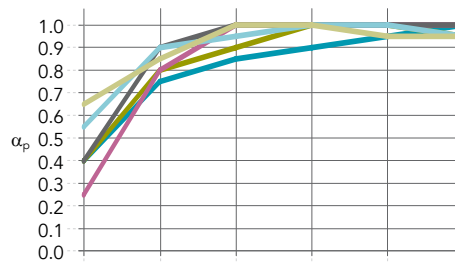
* For full environmental impact disclosure, see our product EPDs available on rockfon.link/cee-epd. Due to differences in calculation methods and scenario assumptions, environmental impact values are generally not directly comparable between manufacturers.



Performance



Sound absorption
 α_w : up to 1,00 (Class A)



Thickness (mm) /
 Suspension (incl. tile - mm)

	125 Hz	250 Hz	500 Hz	1000 Hz	2000 Hz	4000 Hz	α_w	Absorption class	NRC
40 / 200	0.40	0.75	0.85	0.90	0.95	1.00	0.90	A	0.85
50-100 / 200	0.40	0.80	0.90	1.00	1.00	0.95	1.00	A	0.95
50 / 50	0.25	0.80	1.00	1.00	1.00	1.00	1.00	A	0.95
60 / 60	0.40	0.90	1.00	1.00	1.00	1.00	1.00	A	1.00
80 / 80	0.55	0.90	0.95	1.00	1.00	0.95	1.00	A	0.95
100 / 100	0.65	0.85	1.00	1.00	0.95	0.95	1.00	A	0.95



Reaction to fire
 A1



Humidity and sag resistance
 Up to 100% RH.
 No visible deflection in high humidity
 C/ON



Cleaning
 - Vacuum
 - Damp cloth



Hygiene
 Stone wool provides no sustenance to microorganisms



Thermal insulation
 Thermal conductivity:
 $\lambda_D = 37 \text{ mW/mK}$



Recyclability
 Fully recyclable stone wool



Indoor environment
 Rockfon ceiling products are classified in Class E1 in accordance with EN 13964 (EN 717-1). Rockfon ceiling products have a very low release of VOCs. A selection of Rockfon products have achieved the following performance levels and labels in indoor air emissions:



Material Health
 All materials used in Rockfon products are screened against the list of substances restricted under REACH or recognized as Substances of Very High Concern (SVHC) on an ongoing basis. Rockfon stone wool fibres comply with the safe fibre EU regulation and hold an EUCEB certification.

Rockfon production facilities are certified according to the ISO 9001 and ISO 14001 management systems standards.

Sounds Beautiful

